



Disaster Relief



Clean Drinking WATER and POWER
What you need, where you need it.

Supplying up to 2000 liters @30C-80% RH
of Potable water per day
and up to 80 kw of power

Totally independent
and stand-alone system

Portable Solar, Wind packages
ready & optionally available

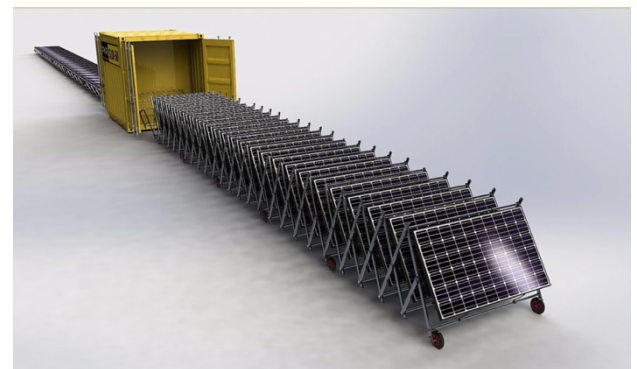
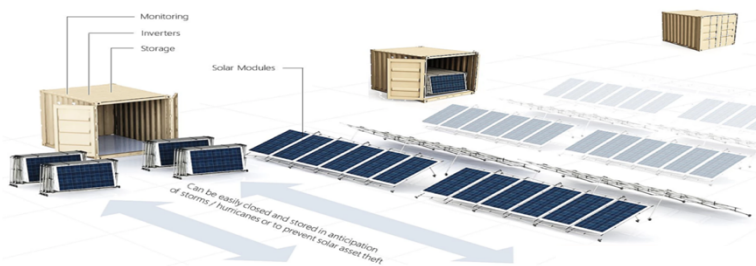
Clean Wave Products International Inc
1-866-337-2535
info@cleanwaveproducts.com
www.cleanwaveproducts.com



Transport by Ship, Truck, Train, Heavy Lift Helicopter



**We get you what you need
where you need it**



Clean Wave Products International Inc

1-866-337-2535

info@cleanwaveproducts.com

www.cleanwaveproducts.com



CWAWG2000

Input Power	24.6kw	
Supply Power	440V 60Hz or 380V 50Hz ,three-phase voltage	
Compressor power	EMERSON 2x 8P	
Production Capacity	upto 2000 Liter/day @ 30° C & 80% RH	
Working Conditions	Temperature	15° C - 45° C
	Humidity	30% - 100% RH
Control system	PLC	
Air filter dimension(mm)	16420*7450*460mm x1set 16120*3680*460mm x1set	
Water Tank	Upper 180L+ Bottom 180 L	
Filteration system	PFF+CTO+UDT+UF+UV+Mineralization	
Refrigerent	R407c	
Phase Protection of Compressor	Phase-sequence Protection	
	Delay Protection	
	Hi & Low Pressure Protection	
	Overheat & Overload Protection	
Defrost Method	FAN COOLING	
Operation sound level	≤70Db	
Net Weight	2030kgs	
Size (LxWxH)	2160*3050*2076mm	

Requirement:

1. The above specifications are basis on 440V/60Hz 4 or 380V/50Hz 3Φ power supply.
2. The water production capacity data is basis on standard working condition (27°C & RH-80%).
3. Before production, buyer need provide environmental study data in sale territory, includes temperature and humidity in day and at night in four seasons.
4. In case the machine need work at special conditions (environmental temperature is not in the range of 20 -38°C), the machine need to be customized to ensure the maximum water generating capacity, which maybe effect final quotation.
5. If the client need move the storage tank outside of the machine, please advise it before production.

Clean Wave Products International Inc
 1-866-337-2535
 info@cleanwaveproducts.com
 www.cleanwaveproducts.com



Power Generator

Filter system:	Integral replacement of oil, diesel and air filters		
Exhaust system:	Use of industrial mufflers with high noise reduction efficiency		
Generator			
Model:	STFI-80-1-4		
Structure and excitation mode:	Brushless self-excitation, self-cooling and pure copper wire fabrication		
Rated capacity (KVA):	100	Rated power (KW):	80
Protection level:	IP22	Insulation grade:	H
Pole number:	4extremely	Efficiency:	99%
No-load voltage adjustment range:	$\geq \pm 5\%$	Voltage control mode:	AVR automatic
Voltage recovery time:	<1s	Frequency volatility:	$\leq \pm 0.25\%$
Control panel			
Control panel:	LCD Control System		
<p>1. The unit also has manual control function and automatic control function. When the user needs automatic control function, the unit uses the city electric signal as the self-starting signal in the automatic state, and does not complete switching. When the unit has high water temperature, low oil pressure, low liquid level and over speed (over speed or under speed), alarm and stop.</p> <p>2. The panel of the control cabinet shows the analog values of water temperature, oil temperature, oil pressure, oil level, speed, frequency, three-phase voltage, load current and battery voltage of the unit.</p>			
Accessories and After-sales Service			
Random Annex:	Battery, Battery Connection, Muffler, Intake and Return Pipe, Spare Parts Box, Random Data		
Defects liability period:	Diesel engines shall comply with the service regulations of the manufacturer, and generators shall be three packages for one year or 1000 hours, whichever comes first.		
Unit parameters			
Unit type:	LH-80GF		
Output Standby Capacity (KVA):	100		
Output Standby Power (KW):	90		
Output Current (A):	144	Output Voltage (V)	460
Frequency (HZ):	60	Power factor:	Lag 0.8
Phase Number and Line System	Three-phase four-wire system	Voltage debugging:	Automatic Constant Pressure System
Voltage test:	Three phase detection	Current testing:	Three phase detection
Steady Voltage Adjustment Rate:	$\leq \pm 1.0\%$	Steady-state frequency adjustment rate:	$\leq \pm 5\%$
Steady Voltage Voltage Fluctuation Rate:	$\leq \pm 0.5\%$	Steady-state frequency volatility:	$\leq \pm 0.5\%$
Transient Voltage Adjustment Rate:	-0.35	Transient Frequency Adjustment Rate:	-10%-10%
Voltage stabilization time:	$\leq 1S$	Frequency stabilization time:	$\leq 3S$
Voltage setting rise range:	$\geq 5.0\%$	Voltage setting drop range:	$\leq -5.0\%$
Frequency drop:	$\leq 3.0\%$	Connection mode:	International General SAE Flexible Connection
Size(L*W*H)(mm):	2200* 800 x 1200	Weight (kg):	1250
Power transmission mode:	Self starting		
Waveform distortion:	Simsoidal wave, waveform distortion < 5%		
Radio interference suppression performance:	Telephone influence coefficient TIF < 50, telephone harmonic coefficient THF < 2%.		
Use environment:	The ambient temperature $\leq 40^{\circ}C$, the altitude $\leq 1000m$, and RH $\leq 60\%$		
Standard	Complying with GB/T 2820-2009		
Diesel engine			
Model	6BT5.9-G2	Output Power (KW)	90/99
Engine structure	6 Cylinder, Four Stroke, Turbocharger		
Cylinder diameter * stroke (mm)	102* 120	Speed Rpm/min	1500
Exhaust capacity L:	5.9	Speed regulation mode:	Electronic speed regulation
Start-up mode:	24V DC Start	Cooling mode:	Closed water circulation air cooling
Fuel consumption rate (100%) g/kw.h	210	Oil capacity L:	16

Container

40' dry container

Tare weight	Payload capacity	Cubic capacity	Internal length
3,750 kg	27,600 kg	67.7 m ³	12.03 m
8,268.8 lbs	61,200 lbs	2,389 cu ft	39.5 ft

Internal width	Internal height	Door opening width	Door opening height
2.35 m	2.39 m	2.34 m	2.28 m
7.7 ft	7.9 ft	7.7 ft	7.5 ft

Clean Wave Products International Inc
1-866-337-2535
info@cleanwaveproducts.com
www.cleanwaveproducts.com





Storage Tank

304 Stainless Steel 2000L Water Tank



Clean Wave Products International Inc
1-866-337-2535
info@cleanwaveproducts.com
www.cleanwaveproducts.com

Options

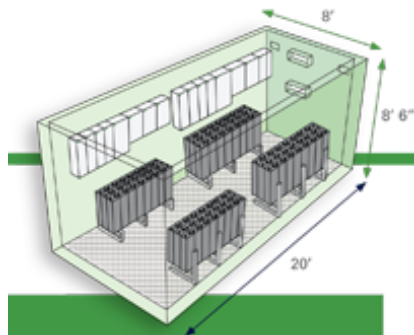


Portable Solar/Wind/ Battery System 20-40-foot container

Up to 60 Kw 720 KWhr AES

retractable solar racking system is a compelling alternative to today's traditional solar mounting products and a powerful solution for permanent or temporary solar energy applications.

Simple, ultra-rapid activation Enables deployments of variable duration Can be easily relocated and redeployed
Distributed through System Integrators Can be closed in case of hurricanes, fire, or for safety
Power container is connectable to CWA WG2000 container



60 kW*
480 kWhr (OPzV)/720 kWhr (AES)**



Clean Wave Products International Inc
1-866-337-2535
info@cleanwaveproducts.com
www.cleanwaveproducts.com

Additional raw or potable water storage

Bladder Tanks for 20- and 40-Foot Shipping Containers

or ground bladders

Shipping container and our bladder tanks equals a great storage tank. Containment can turn your standards ISO shipping containers into a water storage vessel
Our Potable Water Bladders are designed for drinking water storage operations that require storage of potable or drinking water in remote locations, emergency situations, and exploration projects.

Tanks available up to 210,000 US gal

Flexible water storage tanks utilizing NSF-61, CE and Mil-Spec Certified fabric

Bladder container is connectable to CWAWG2000 container



Clean Wave Products International Inc

1-866-337-2535

info@cleanwaveproducts.com

www.cleanwaveproducts.com